



yellobrik®

yellobrik®

Quick Reference

RXT 1001 Power supply holder for RFR 1000-1



This mounting bracket and holder can be installed on the RFR 1000-1 and can accommodate one RPS A100/ RPS 1120 external power supply. Use two RXT 1001 power supply holder to secure the main and redundant external power supplies.

Technical Specifications

Size 447mm x 103.35mm x 44mm (17.6in x 4.07in x 1.73in)

Weight 380g (13.4oz)

Model # RXT 1001 (EAN# 4250479327962)

Includes 1x power supply holder, 1x mounting bracket, 4 screws

We are constantly adding more yellobrik modules.
Please visit our website for the latest product updates.

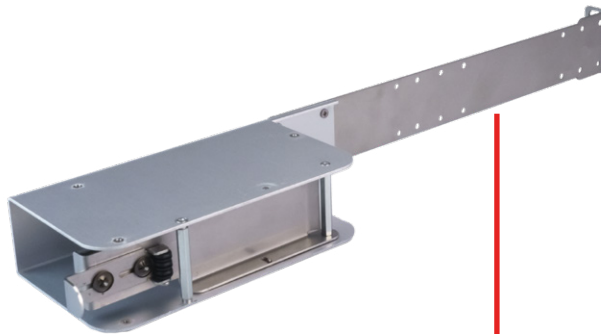
www.lynx-technik.com

LYNXTechnik AG | www.lynx-technik.com

Brunnenweg 3, D-64331 Weiterstadt, Germany

RXT 1001

Power Supply Holder for RFR 1000-1



Power Supply Holder

"L" Shape Bracket



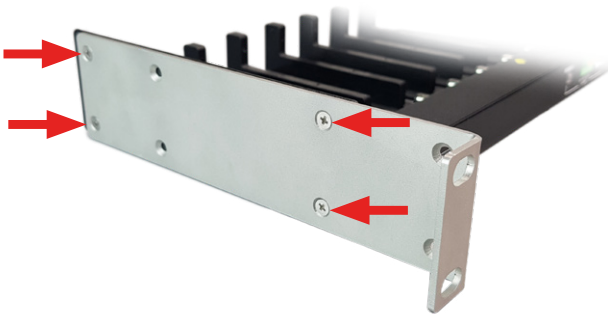
Description

RXT 1001, a power supply holder for RFR 1000-1 yellobrik rack frame, can simplify cable management by securing the external power supply and making the installation neat.

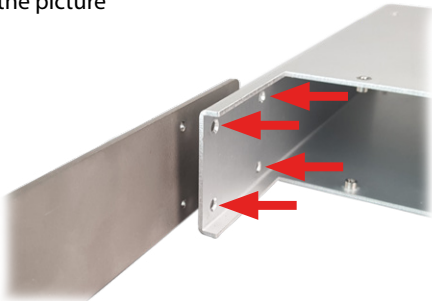
RXT 1001 can secure one RPS A100 (RPS 1120) power supply. The RFR 1001 is a mounting bracket for any single yellobrik module. The RXT 1001 consists of two parts: Mounting Bracket and Power supply holder.

Mounting a module in the bracket

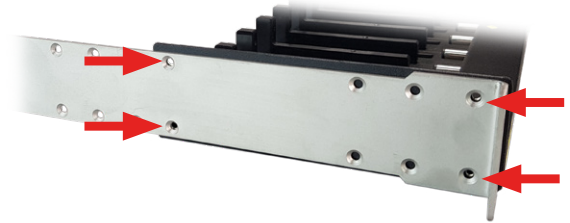
Step 1: Unscrew and dismount the existing bracket on an RFR 1000-1 rack frame. Keep the screws as they would be needed in the next steps.



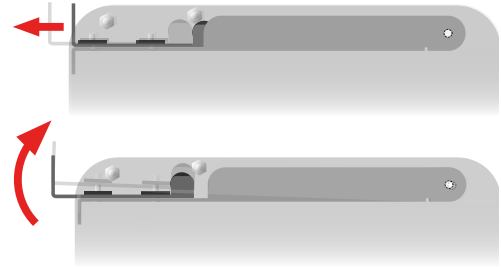
Step 2: Secure RXT 1001 mounting bracket with power supply holder as shown in the picture



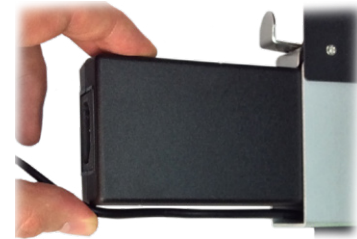
Step 3: Secure RXT 1001 on RFR 1000-1 using the screws obtained in Step 1.



Step 4: Unlock and slide over the power supply support clip



Step 5: Insert the power supply in the power supply holder



Lock the power supply support clip by pushing it inwards again. Try to move the module to ensure the fit is secure. No tools are required to insert and remove a power supply module from the bracket.